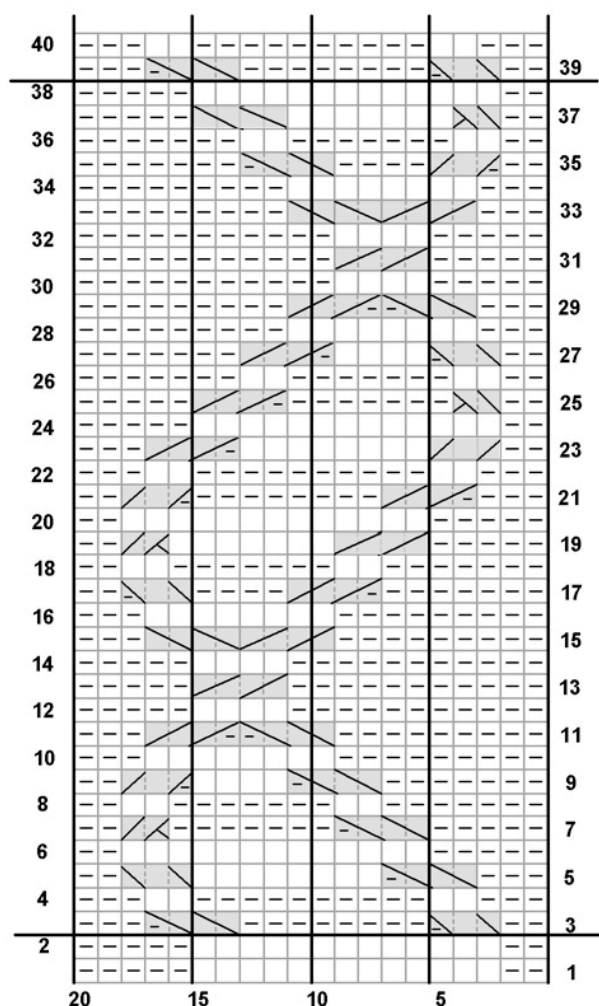


Double Helix Cable

Copyright 2000, 2004 June Oshiro, All rights reserved.

joshiro@gmail.com



Cast on 20 stitches.

Work rows 1 and 2.

Work pattern rows 3-38 (repeat 3-38 if longer patterned strip is desired).

Work rows 39 and 40.

Symbol Key

<input type="checkbox"/>	Knit on right side, purl on wrong side	<input type="checkbox"/>	Purl on rs, knit on ws
	Slide 2 onto cable needle, hold in front, P1, then K2 from cable needle		
	Slide 2 onto cable needle, hold in front, P2, then K2 from cable needle		
	Slide 2 onto cable needle, hold in front, K1, then K2 from cable needle		
	Slide 1 onto cable needle, hold in back, K2, then P1 from cable needle		
	Slide 2 onto cable needle, hold in back, K2, then P2 from cable needle		
	Slide 2 onto cable needle, hold in back, K2, then K2 from cable needle		
	Slide 2 onto cable needle, hold in front, K2, then K2 from cable needle		
	Slide 1 onto cable needle, hold in back, K2, then K1 from cable needle		
	Skip 1 st and knit the 2nd st, leaving it on the needle, then knit the skipped st and sl both sts from needle together		
	Take right needle behind left needle, skip 1 st and knit the second st in the back loop, then knit the skipped st in front loop, sl both sts from needle together		